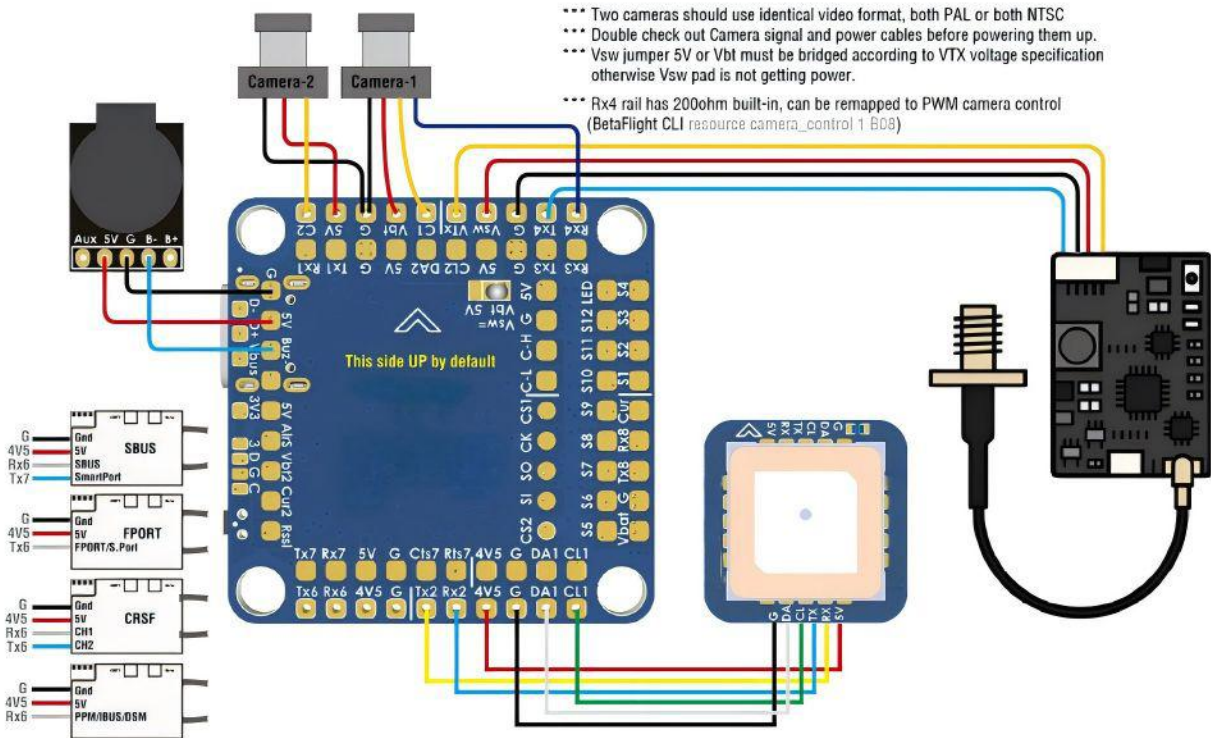
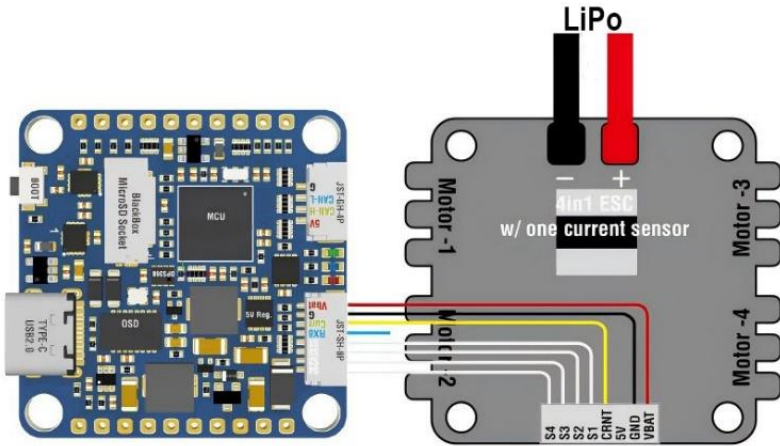


Product	
Product Name	FC Pilotix H743
Model	SLIM
SKU	7286
Specification	
MCU	STM32H743VIH6
IMU	ICM-42688-p
Barometer	DPS310XTSA1
OSD	AT7456E
Protocol	CRSF
Support Firmware	ArduPilot, BetaFlight
Input Voltage	2 - 8S LiPo
BEC 5V	5V 2A cont. (Max.3A)
BEC 9V	9V 2A cont. (Max.3A)
LDO 3.3V	Max. 200mA
Current Sensor	No
Mounting	30.5×30.5mm, Φ4mm with Grommets Φ3mm
Dimensions	36×36×5 mm
Weight	7g
Package Includes	<ul style="list-style-type: none"> <li>×1 H7A3-SLIM</li> <li>×6 Silicon grommets M4 to M3</li> <li>×2 8pin connectors</li> <li>×1 JST-GH-4P to JST-GH-4P cable for CAN port, 20cm</li> <li>×1x JST-SH1.0_8pin cable</li> </ul>

Wiring diagram:



- \*\*\* Two cameras should use identical video format, both PAL or both NTSC
- \*\*\* Double check out Camera signal and power cables before powering them up.
- \*\*\* Vsw jumper 5V or Vbt must be bridged according to VTX voltage specification otherwise Vsw pad is not getting power.
- \*\*\* Rx4 rail has 200ohm built-in, can be remapped to PWM camera control (BetaFlight CLI resource camera\_control 1 608)

with INAV/BetaFlight firmware  
 \*\*\* SBUS/IBUS/DSM can be connected to any spare UART\_RX  
 \*\*\* FPort, SmartPort can be connected to any spare UART\_TX  
 \*\*\* PPM share Rx6 pad, must disable Serial RX on UART6